



# METRO Emergency Response and Regional Support



# Houston Region Evacuation

- ▶ METRO's response is guided by its Emergency Management Plan and the Continuity of Operations Plan (COOP).
- ▶ METRO coordinates closely and is integrated into the Emergency Management Plans of Harris County and the City of Houston.
- ▶ The METRO Emergency Operations Center (EOC) is located at TranStar and is represented at:
  - Harris County EOC
  - City of Houston EOC
  - Houston Downtown Management District EOC

# Houston Region Evacuation

- ▶ METRO's regional role:
  - Transportation of persons with functional and access needs to the centers of embarkation.
  - Staff the Houston 311 Center where "211" information is processed and assets are coordinated to transport persons with functional and access needs.
  - Provide 30 buses to the City of Galveston in order to assist with their evacuation, if needed.

# Houston Region Evacuation

- ▶ METRO has worked with the Harris County Department of Education (and local school districts) to better coordinate the use of transportation assets.
- ▶ METRO fields transportation requests from various other entities/agencies in the region during emergencies via the Harris County and City of Houston Offices of Emergency Management.

# METRO Hurricane Preparedness Week

This week is Hurricane Preparedness Week, and June 1 marks the beginning of hurricane season. Even though our area has not experienced a hurricane since Ike, we should be prepared in case we get one this season.

Please read the information below and visit the links provided.

- Determine if you live in a zone that could be evacuated due to storm surge. Visit <http://www.houstonoem.net/go/doc/1855/247859/>.
- **Have a plan.** If you must evacuate, learn evacuation routes BEFORE storm season. Make sure you have a full tank of gas before you leave. Expect delays and longer drive-times than normal. **Just like any rush hour, traffic congestion in an evacuation is unavoidable.**
- Make a checklist of preparations to be made before an evacuation and go over it with your family. Review it again when a storm is in the Gulf of Mexico.
- If you plan to stay in a hotel or motel, make reservations and confirm your reservations before you leave. If you plan to stay in a shelter, bring what you need to be comfortable, including bedding and toys for kids. Shelters will vary in what they offer evacuees.
- **Build a kit.** Prepare an emergency kit for you and your family (don't forget your pets!) and a plan for how to care for them when you are on the road and in a shelter or motel. Do not leave your pets behind. Visit <http://www.ready.gov/> for more information.
- **Stay Informed.** Stay tuned to your local news/weather stations or visit your local [Office of Emergency Management](#) website for alerts, warnings, and information.
- If you, or anyone you know, need transportation assistance, visit <https://www.211texas.org/211/hurricane/alert.do> or call 211 to sign up for transportation assistance. This should be done before a hurricane is in the Gulf.

## Useful Links

<http://www.nhc.noaa.gov/>

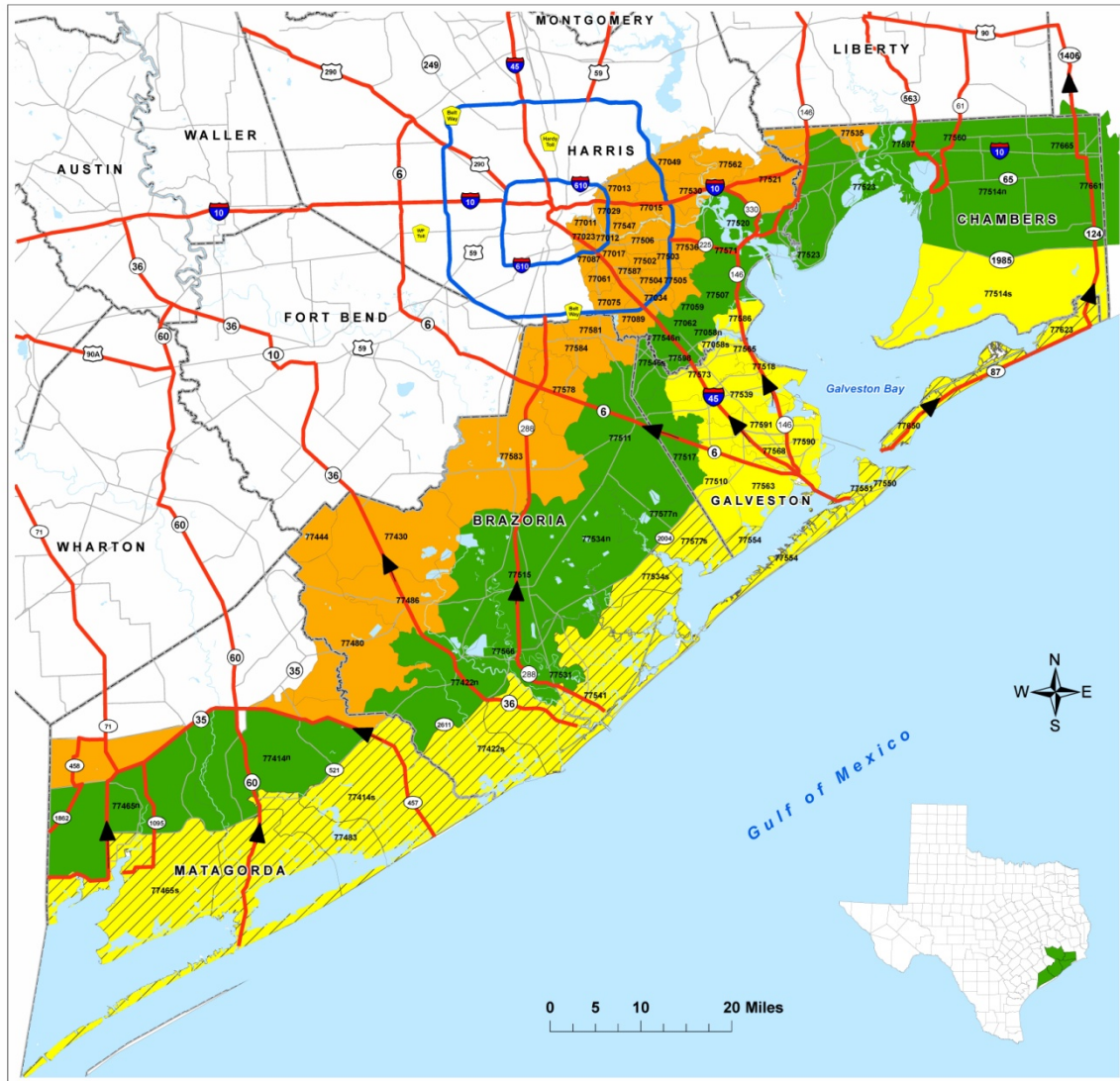
<http://www.readyhoustontx.gov/>

<http://www.houstonhidefromthewind.org/>

<http://www.metroresponds.org/go/site/1527/>

<http://www.houstonoem.net/go/site/1855/>

<http://www.hcoem.org/>



### Brazoria, Chambers, Galveston, Harris and Matagorda Hurricane Evacuation Zip-Zones Coastal, A, B, C

Zip-Zone Coastal				
77414s	77483	77550	77577s	77650
77422s	77534s	77551	77617	
77465s	77541	77554	77623	
Zip-Zone A				
77058s	77518	77565	77586	
77510	77539	77568	77590	
77514s	77563	77573	77591	
Zip-Zone B				
77058n	77507	77522	77560	77661
77059	77511	77523	77566	77665
77082	77514n	77531	77571	
77414n	77515	77534n	77577n	
77422n	77517	77546n	77597	
77465n	77520	77546s	77598	
Zip-Zone C				
77011	77034	77444	77505	77562
77012	77049	77463	77506	77578
77013	77061	77480	77521	77581
77015	77075	77486	77530	77583
77017	77087	77502	77535	77584
77023	77089	77503	77536	77587
77029	77430	77504	77547	

#### Route Designation

- Evacuation Corridors
- Evacuation Connections
- Other Roads
- County Boundary